

EMERALD LAKES PHASE VII

BEING A REPLAT OF A PORTION OF PHASE VII OF THE PLAT OF EMERALD LAKES PHASES VI & VII AS RECORDED IN PLAT BOOK 9, PAGE 67 AND BEING A REPLAT OF A PORTION OF EMERALD LAKES AS RECORDED IN PLAT BOOK 9, PAGE 22 OF THE PUBLIC RECORDS OF MARTIN COUNTY, FLORIDA.

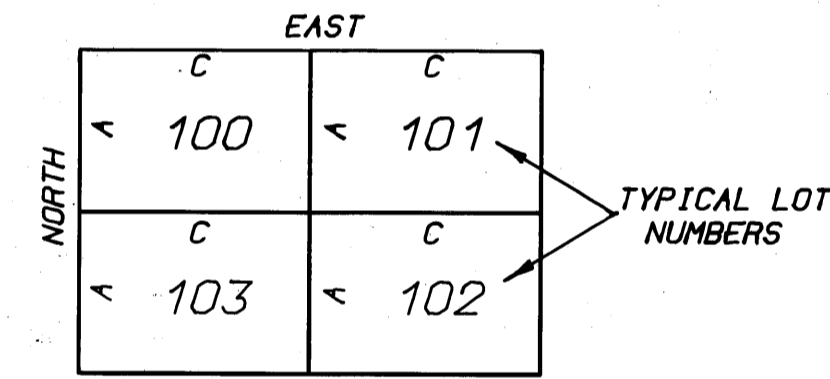
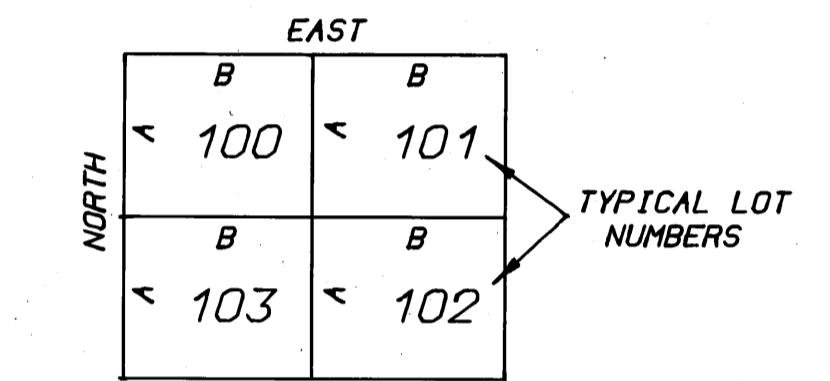
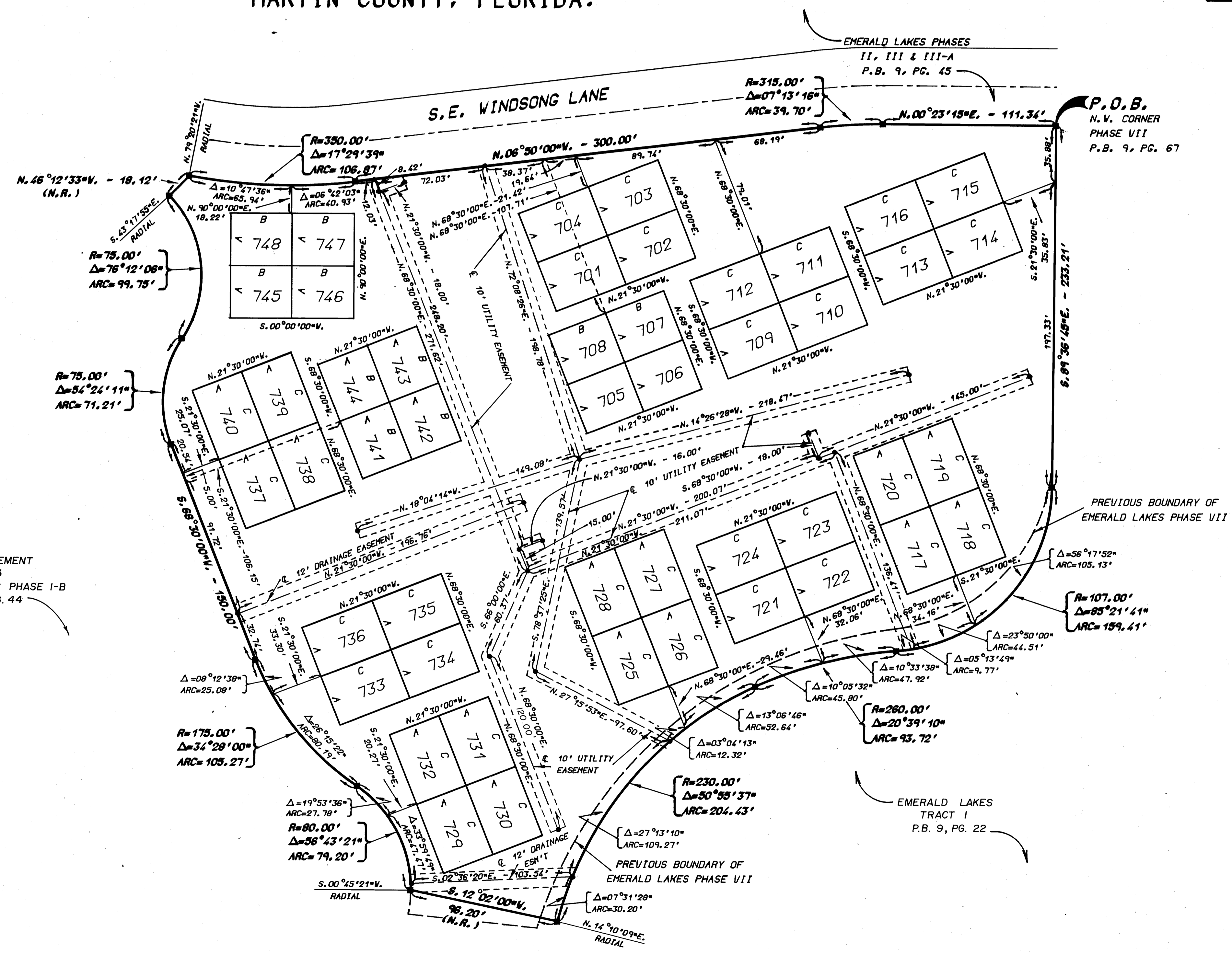
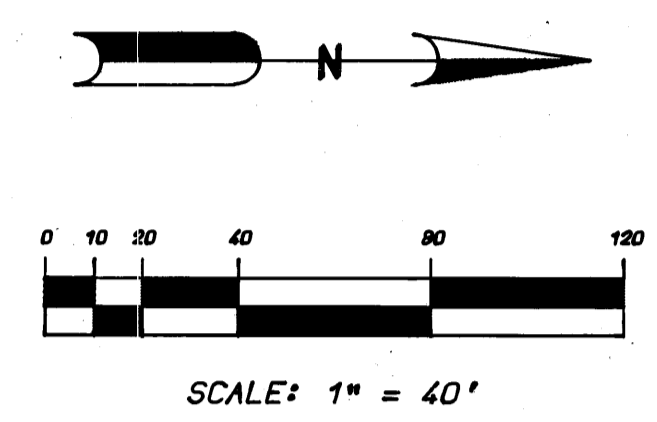
I, LOUISE V. ISAACS, CLERK OF THE CIRCUIT COURT OF MARTIN COUNTY FLORIDA, HEREBY CERTIFY THAT THIS PLAT WAS FILED FOR RECORD IN PLAT BOOK 10, PAGE 22, MARTIN COUNTY, FLORIDA, PUBLIC RECORDS THIS DAY OF 1985.

LOUISE V. ISAACS, CLERK
CIRCUIT COURT
MARTIN COUNTY, FLORIDA

BY: _____
DEPUTY CLERK

FILE NO. _____

THIS INSTRUMENT PREPARED BY:
MICHAEL T. KOLODZIEJCZYK P.L.S. 3864 STATE OF FLORIDA
LAWSON & NOBLE, INC.
ENGINEERS - PLANNERS - SURVEYORS
LAKE NORTH, FLORIDA



TYPICAL LOT LAYOUT

"A" DENOTES A DISTANCE OF 33.92 FEET
"B" DENOTES A DISTANCE OF 39.92 FEET
"C" DENOTES A DISTANCE OF 47.92 FEET

SURVEYORS' NOTATIONS:

■ DENOTES PERMANENT REFERENCE MONUMENT (P.R.M.)
BEARINGS SHOWN HEREON ARE BASED ON THE PLAT OF EMERALD LAKES PHASES VI & VII AS RECORDED IN P.B. 9, PG. 67 OF THE PUBLIC RECORDS OF MARTIN COUNTY, FLORIDA.